

8 July 2008

| | 7-VII. | | | | 4-VII. | 1D | % change | | | | Turnover | | Avg. Daily Turnover (\$ mil.) |
|------------------|---------|---------|---------|---------|---------|-------|----------|--------|--------|---------|----------|--|-------------------------------|
| | open | high | low | close | close | | 1W | 1M | 1Y | shares | \$ mil. | | |
| PX | 1 421.3 | 1 443.6 | 1 421.3 | 1 442.1 | 1 420.0 | 1.6% | -2.8% | -11.7% | -24.0% | -- | 269.2 | | |
| CME | 1 344 | 1 360 | 1 325 | 1 345 | 1 325.0 | 1.5% | -2.3% | -17.5% | -36.5% | 6 414 | 0.5 | | |
| Telefonica 02 CR | 481.9 | 485.0 | 476.4 | 484.5 | 478.6 | 1.2% | -0.4% | -4.0% | -19.8% | 269 235 | 7.3 | | |
| CEZ | 1 326.0 | 1 373.0 | 1 305.0 | 1 324.0 | 1 308.0 | 1.2% | -1.6% | 0.8% | 16.4% | 560 077 | 41.4 | | |
| ECM | 637.6 | 641.0 | 625.9 | 634.10 | 639.5 | -0.8% | -2.7% | -13.8% | -64.7% | 3 688 | 0.1 | | |
| Erste Bank | 914 | 918 | 894 | 916 | 912 | 0.4% | -3.2% | -18.3% | -45.8% | 381 917 | 19.4 | | |
| Komerční banka | 3 390 | 3 605 | 3 310 | 3 595 | 3 350 | 7.3% | 1.8% | -13.0% | -12.8% | 128 222 | 25.1 | | |
| Orco Pr. Group | 864 | 878 | 835 | 841 | 854 | -1.5% | -4.7% | -26.6% | -75.0% | 45 300 | 2.2 | | |
| PEGAS | 336 | 338 | 328 | 333 | 334 | -0.0% | -7.3% | -28.0% | -59.0% | 8 709 | 0.2 | | |
| Philip Morris CR | 4 081 | 4 100 | 3 820 | 3 923 | 3 991 | -1.7% | -11.2% | -28.6% | -64.4% | 6 966 | 1.5 | | |
| Unipetrol | 228.6 | 232.0 | 224.9 | 230.6 | 224.9 | 2.5% | -7.5% | -17.4% | -20.4% | 163 830 | 2.1 | | |
| Zentiv a | 1 113 | 1 115 | 1 106 | 1 109 | 1 112.0 | -0.3% | -0.3% | 8.2% | -22.2% | 122 007 | 2.2 | | |
| AAA Auto | 19.0 | 18.8 | 18.8 | 18.9 | 18.8 | 0.2% | -4.9% | -19.2% | #N/A | 5 137 | 0.0 | | |
| VIG | 985.5 | 995.0 | 990.0 | 985.5 | 991.6 | -0.6% | -2.3% | -15.4% | #N/A | 1 600 | 0.1 | | |
| NWR | 487.0 | 494.0 | 469.0 | 479.8 | 477.3 | 0.5% | -52.4% | -58.8% | #N/A | 522 969 | 0.0 | | |

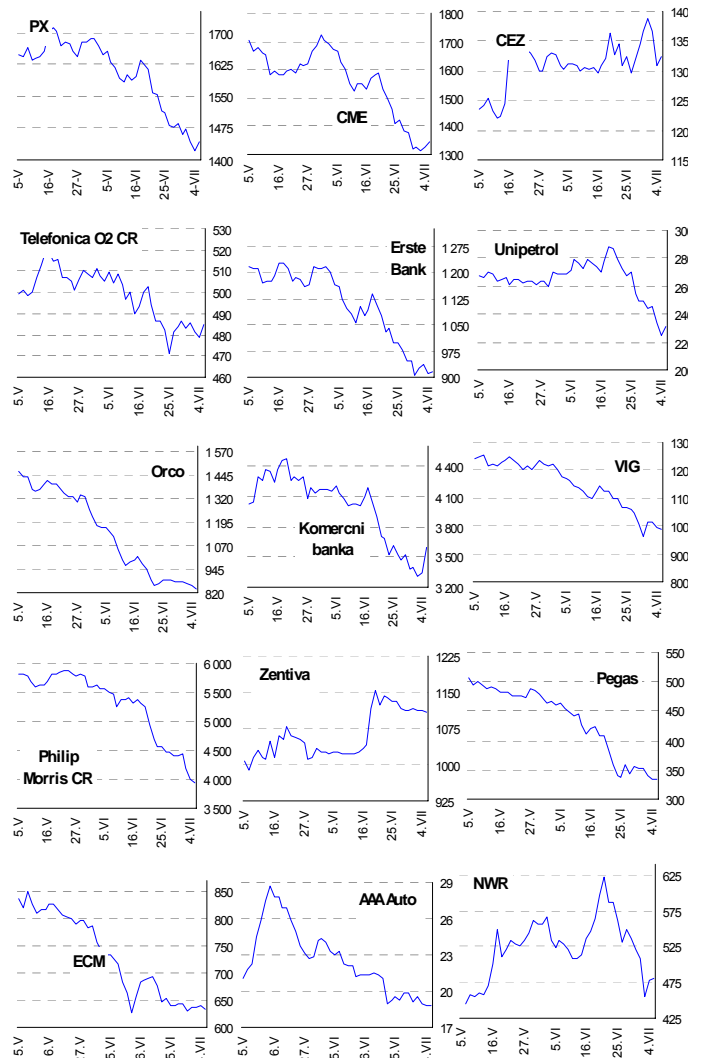
NEWS & COMMENTS

Zentiva: Sanofi-Aventis sent takeover bid to CNB

Czech national bank received yesterday the takeover bid made by Sanofi-Aventis for shares of Zentiva. Sanofi already stated on June 18 that it would offer CZK 1,050/share for shares of Zentiva as a counter bid to the bid made earlier by PPF group (CZK 950/share). (Bloomberg)

No event for Zentiva (Radim Kramule 224 995 213)

PX INDEX & EQUITIES



UPCOMING EVENTS

| Stock | Recommend | Price Target | 12M Target | Date |
|------------------|------------|--------------|------------|-----------|
| CME | Reduce | -- | USD 92.6 | 08/Feb 27 |
| Telefonica 02 | Buy | -- | CZK 700 | 08/Mar 11 |
| CEZ | Hold | -- | CZK 1,255 | 08/Feb 14 |
| Komerční banka | Accumulate | -- | CZK 4,400 | 07/May 5 |
| Orco | U.review | -- | U. review | -- |
| Unipetrol | Buy | -- | CZK 358 | 08/Mar 17 |
| VIG | Restricted | -- | restricted | -- |
| Zentiva | Accumulate | -- | CZK 1,120 | 08/Mar 26 |
| Philip Morris CR | Hold | -- | CZK 8,800 | 07/Dec 6 |
| Pegas | Hold | -- | CZK 505 | 08/Apr 25 |
| ECM | Buy | -- | CZK 1380 | 08/Feb 28 |

CS-Equity Research: Jakub Zidon, tel:+420 224 995 340, Petr Bartek, tel:+420 224 995 227, Radim Kramule, tel:+420 224 995 213

Equity Sales: Michal Brezna, tel: +420 224 995 523, 24, 25; Jiri Smehlik, tel. +420 224 995 510, Michal Rizek, tel. +4420 7623 4154, +420 224 995 537

Although we judge our sources of information to be reliable, we do not accept any responsibility for the completeness and accuracy of our information. This report is neither an offer nor an invitation to purchase or sell stock. All rights reserved. Important disclaimers are available at: http://www.csas.cz/research_disclosures